

bonshure®

e-22 nova

waterborne acrylic sealer

classic
timber floor finish

e
a
s
y
s
e
a
l
e
r

Product Introduction

bonshure sealer e-22 is a single component waterborne acrylic base coat for wooden flooring. It is an economical sealer and of high quality wooden flooring sealing compound. Suitable for use for both residential and commercial projects.

Features

- *Easy to apply and easy abrade
- *Fast drying and no bubbling
- *No lap marks & streaks; odorless
- *High build, solid content
- *Rich wooden and texture
- *Can be finished and compatible with all waterborne finishes
- *To mend the parquet hole
- *Suitable for all common wood species except: merbau, teak, oak, kempas, maple, etc.

Preparation

When you using the bonshure sealer e-22 you must ascertain floor must be cleaned, dry without dust, dirt, wax and grease removed. New untreated floor can select wood sand paper grit 24-40 & existing floor should be sanded down to have wood and final sanding with wood sand paper grit 40-120. Do not dilute the product with other liquid .Shake well before use.

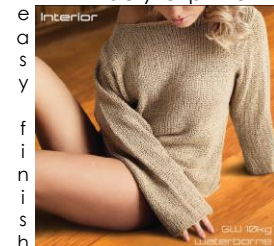
Application

Apply 2-3 coat of bonshure sealer e-22, lightly sanding between coats. Firstly use 10 inch formica sheet or 10 inch scraper in sheet form and apply with bonshure sealer e-22 on the parquet surface ascertain bonshure sealer e-22 on parquet have layer is thickness. After 2.0-2.5 hours dry, final sanding with sand paper grit 240-320 and use the 10 inch formica sheet or 10 inch stainless steel scraper scrape 1-2 coats. After application, when thoroughly dry apply a bonshure polyurethane top coat e-9/e-7 or bonshure top& primer e-3 to achieve the desire finish.

Technical Data

Solid Content	48 %
Viscosity	Approx.14 sec.Fc4.
Application Tools	10 inch formica , 10 inch stainless steel scraper, floor coater
Coverage	1600-1800 square feet /10kg
Dry Time	2.0 -2.5 hours for one scrap (if to encounter air temperature is below 28°C dry time is not stable)
Shelf Life	Shelf life 12 months in unopened container.
Storage	Store away from direct sunlight .
Package Size	10 kg
Technology	German
Material	German

acrylic primer



Our information based on laboratory tests and practical experience and may as such be considered a guide in connection with choice of product and working method. As the users working conditions is beyond our control, we do not assume any responsibility for the result. Our responsibility covers exclusively personal injury or damage to property which actually have been proved subsequent to faults and defects in one of the products manufactured by us.

KSC INDUSTRIES (M) SDN BHD No16, Jalan Sungai Jeluh 32/189, Bukit Naga Seksyen 32 ,40460 Shah Alam selangor.

Tel:(03)-51668790 Fax: (03)-51670942 Website:www.ksc-monatec.com Email: info@ksc-monatec.com.