

bonshure® waterborne classic

e-7 nova

S
i
l
k
m
a
t

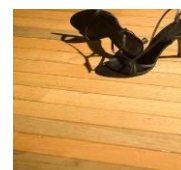
timber floor finish
polyurethane top coat

Product Introduction

bonshure polyurethane top coat e-7 is a high quality one-component waterborne polyurethane finish and is an economical product suitable for timber flooring & wood floor ,use for both residential and commercial projects.

Feature

- *without the stink; ; odorless
- *easy to apply and clear
- *high scratches resistance
- *high scuff resistance
- *no bubbling , beautiful leveling.
- *Fast drying and high solid content
- *excellent durability ; non yellowing
- * non yellowing



not easy scratching

Preparation

When you using the bonshure polyurethane top coat e-7, you must ascertain floor surface must be cleaned, dry without dust, dirt, wax and grease removed. Before using bonshure polyurethane top coat e-7, you must ascertain wood floors not be apply any other primer and you must apply bonshure primer only. So will not exhibit any problem and can achieve good result. Do not dilute the product with water or other liquids in the product. Shake well before use.

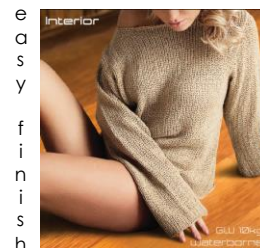
Application

After final coat bonshure primer apply 1-2 coat bonshure polyurethane top coat e-7 over the surface. 2-3 hours dry time for one coat bonshure polyurethane top coat e-7 and that we approximately after 6 hours final coat can step on the floor. After four night final coat the floor can be mop with dry cloth on the floor . Coating system reaches final hardness after approx, 1 days. For best result, apply 2-3 bonshure primer e-4 or bonshure sealer e-22,(In the case of number to apply coats up to your timber) after final coat bonshure primer apply 1-2 bonshure polyurethane top coat e-7 this can make to parquet flooring more resilient to with stand scratching in the long run

Technical Data

Solid content	34%
Application Tools	sponge , floor coater, 10 inch formica , roller
Intercoat abrasion	can be recoated without in tercoat abrasion within 24 hours
Suitable use	kitchens, living rooms, active homes with children, office, hospital, shop,etc
Dry Time	2-3 hours for one coat(if to encounter air temperature is below 28°C dry time is not stable)
Sand paper	water sand paper grit 240-320
Shelf Life	Shelf life 12 months in opened container.
Gloss level	gloss 45%, matt 55%.
Coverage	1500-1600 square feet / 10 kg
Storage	Store away from direct sunlight .
Package size	10 kg
Technology	German
Material	German

polyurethane top coat



Our information based on laboratory tests and practical experience and may as such be considered a guide in connection with choice of product and working method. As the users working conditions is beyond our control, we do not assume any responsibility for the result. Our responsibility covers exclusively personal injury or damage to property which actually have been proved subsequent to faults and defects in one of the products manufactured by us.

KSC INDUSTRIES (M) SDN BHD No 16, Jalan Sungai Jeluh 32/189, Bukit Naga Seksyen 32, 40460 Shah Alam selangor.

Tel:(03)-51668790 Fax: (03)-51670942 Website:www.ksc-monatec.com Email: info@ksc-monatec.com.